

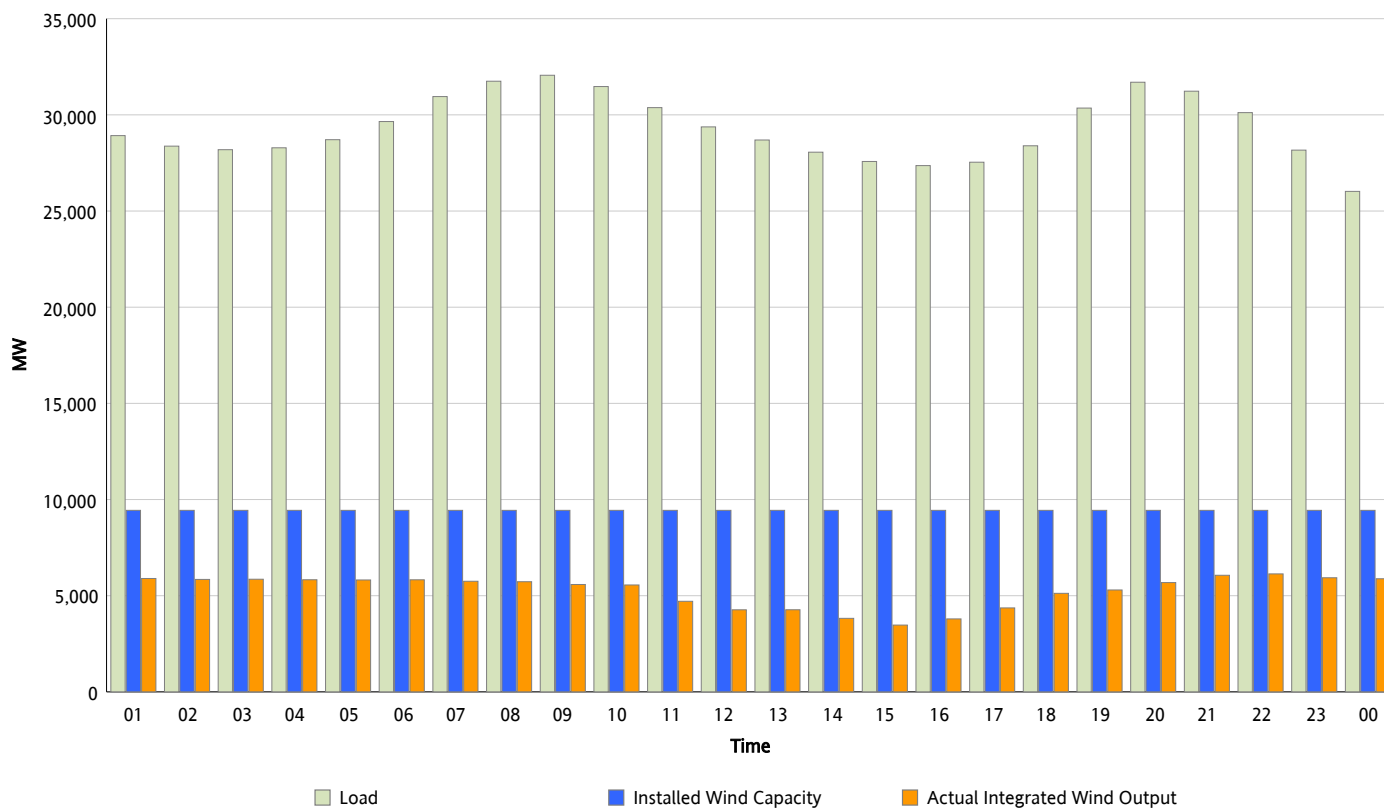


ERCOT Grid Operations

Wind Integration Report : 02/26/2012

Peak Load	32,059 MW
Load Peak Hour (HE)	09
Wind Over Peak	5,583 MW
Wind Record 10/07/11	7,400 MW
Max Wind Value*	6,315 MW
Wind Peak Time	21:10
Wind Integration %	20.58 %

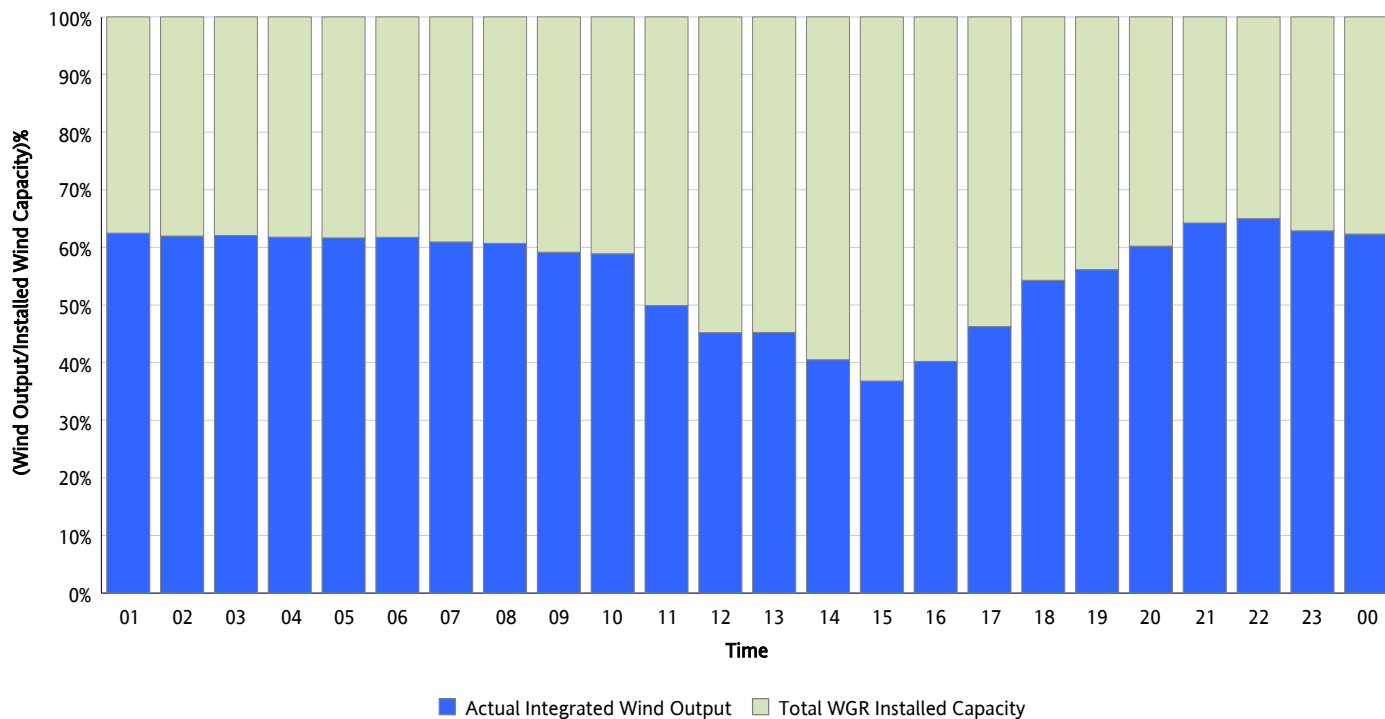
Hourly Average Actual Load vs. Actual Wind Output
02/26/2012



* Wind Max represents the instantaneous value and the rest of the values are integrated over the hour

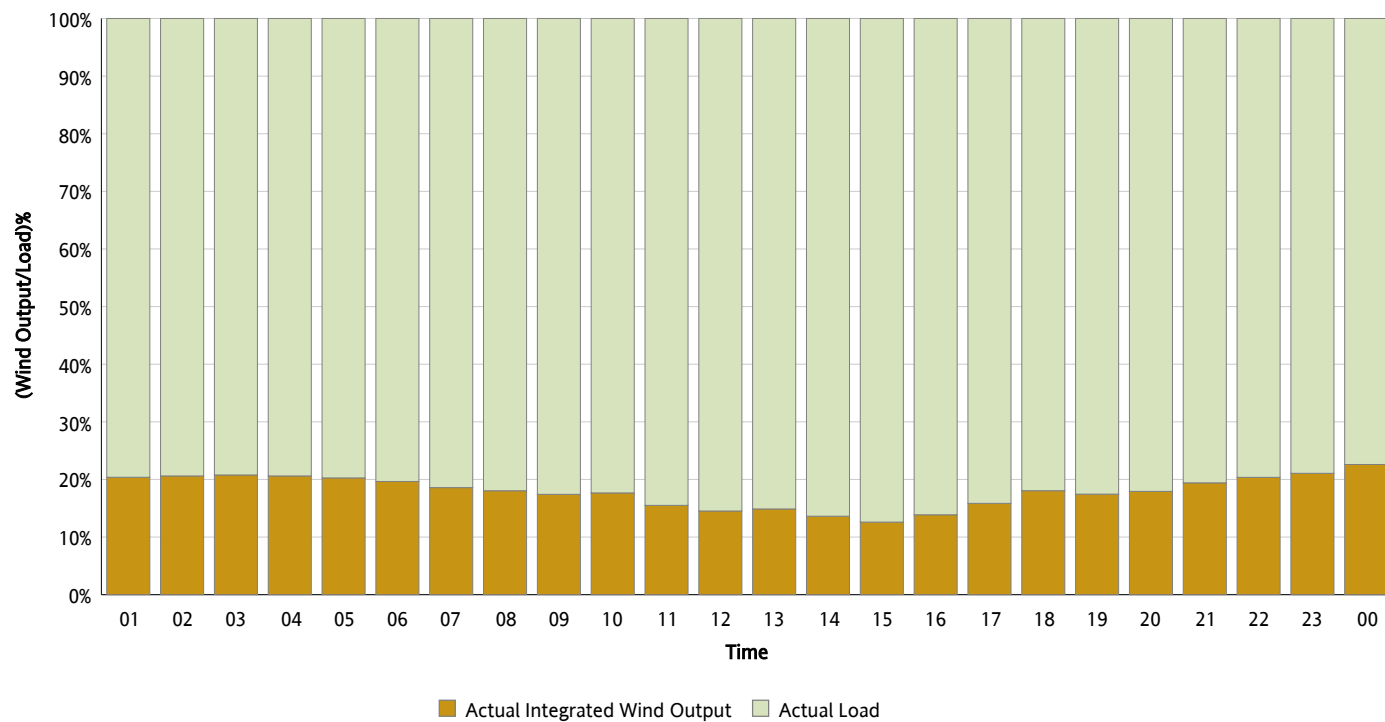
Actual Wind Output as a Percentage of the Total Installed Wind Capacity

02/26/2012



Actual Wind Output as a Percentage of the ERCOT Load

02/26/2012



ERCOT Load vs. Actual Wind Output

02/19/2012 - 02/26/2012

